

# Modular Signal Tower with USB Terminal Element



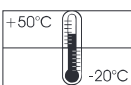
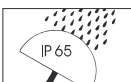
## Technical Specifications/Order Specifications

### USB Terminal Element for KombiSIGN 71 + 72

Dimensions (Ø x Height)	70 mm x 36 mm
Fixing	Tube mounting
Power supply	Via USB (5 V DC)
Voltage	24 V DC
Current carrying cap. $\Sigma$ I <sub>max</sub>	90 mA at 24 V
Life duration	Up to 50,000 hrs
Terminal Element	<b>640 840 00</b>
Pre-configured signal tower (green, yellow, red)	<b>649 000 05</b>

Assembly

Demo software, driver, handbook and USB connection cable (1.8 m long), System requirements see handbook



## Accessories



Base with integrated tube Ø 25 mm, plastic

Base for tube, Ø 25 mm, metal

Tube Ø 25 mm, all anodised aluminium, 100, 250, 400, 600, 800, 1000 mm long

**KombiSIGN 71 (red, green, yellow, white, blue)\***

Permanent light element

LED Permanent light element

LED Permanent light element ultrabright

Flashing light element (Xenon)

LED Flashing light element

LED EVS element

LED Blinking light element

LED Rotating light element

LED Permanent light element multicolour

**KombiSIGN 72 (red, green, yellow, white, blue)\***

TwinLIGHT (Permanent/Blinking light)

TwinFLASH (Flash/EVS)

\*Order no. can be found at [www.werma.com](http://www.werma.com) or in the catalogue.

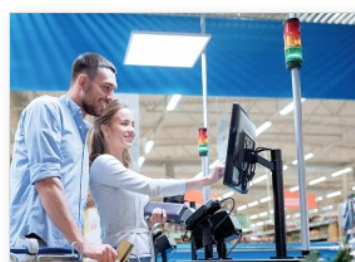
## Benefits

- Direct triggering of signal tower elements via USB Interface
- Actuation via DLL (Dynamic Link Library) or VCP (Virtual-COM-Port)
- Simple integration into any customer-specific software
- No additional power supply or hardware necessary
- Up to five signal towers with a maximum of five tiers each can be connected
- They can be directly connected and are ready for immediate use (plug and play)
- Maximum cable length 5m

## Typical applications



Signal Tower in call centres

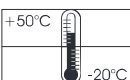


Automated check-out systems



Printer in the office or the manufacturing department

# LED Beacon with USB Interface



## Technical Specifications/Order Specifications

### LED Beacon Multicolour (PG29)

Dimensions (Ø x Height) 75 mm x 66 mm (Protrusion from panel)

Fixing Installation mounting for Ø 37 mm, Base and Wall mounting (accessories)

Power supply Via USB

Colour options More than 200,000 colours (RGB LED)

Voltage 5 V (USB-Connection)

Current consumption ≤ 500 mA

Life duration Up to 50,000 hrs

Order no. **816 480 53**

Assembly Demo software, driver, handbook and USB connection cable included (1.8 m long), System requirements see handbook

## Accessories



Tube adaptor

Base with integrated tube, Ø 25 mm, 110 mm long, plastic

Base for tube mounting

Base for base mounting

Tube Ø 25 mm, all anodised aluminium, 100, 250, 400 mm long

Anti-twist device

Surface housing IP65 for 1, 2, 3 or 4 Installation Beacons

\*Order no. can be found at [www.werma.com](http://www.werma.com) or in the catalogue.

## Benefits

- Direct triggering of LED beacon via USB Interface
- Actuation via DLL (Dynamic Link Library) or VCP (Virtual-COM-Port)
- Simple integration into any customer-specific software
- No additional power supply or hardware necessary
- They can be directly connected and are ready for immediate use (plug and play)
- Maximum cable length 5m
- A wide range of colours and light effects can be quickly and simply programmed by the customer and altered at any time.

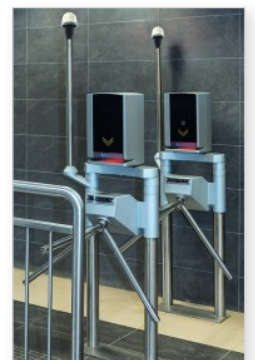
## Typical applications



LED Beacon in call centres



Inspection stations in the manufacturing department



Public access systems



WERMA Signaltechnik GmbH + Co. KG  
Dürbheimer Str. 15  
78604 Rietheim-Weilheim  
[www.werma.com](http://www.werma.com)