



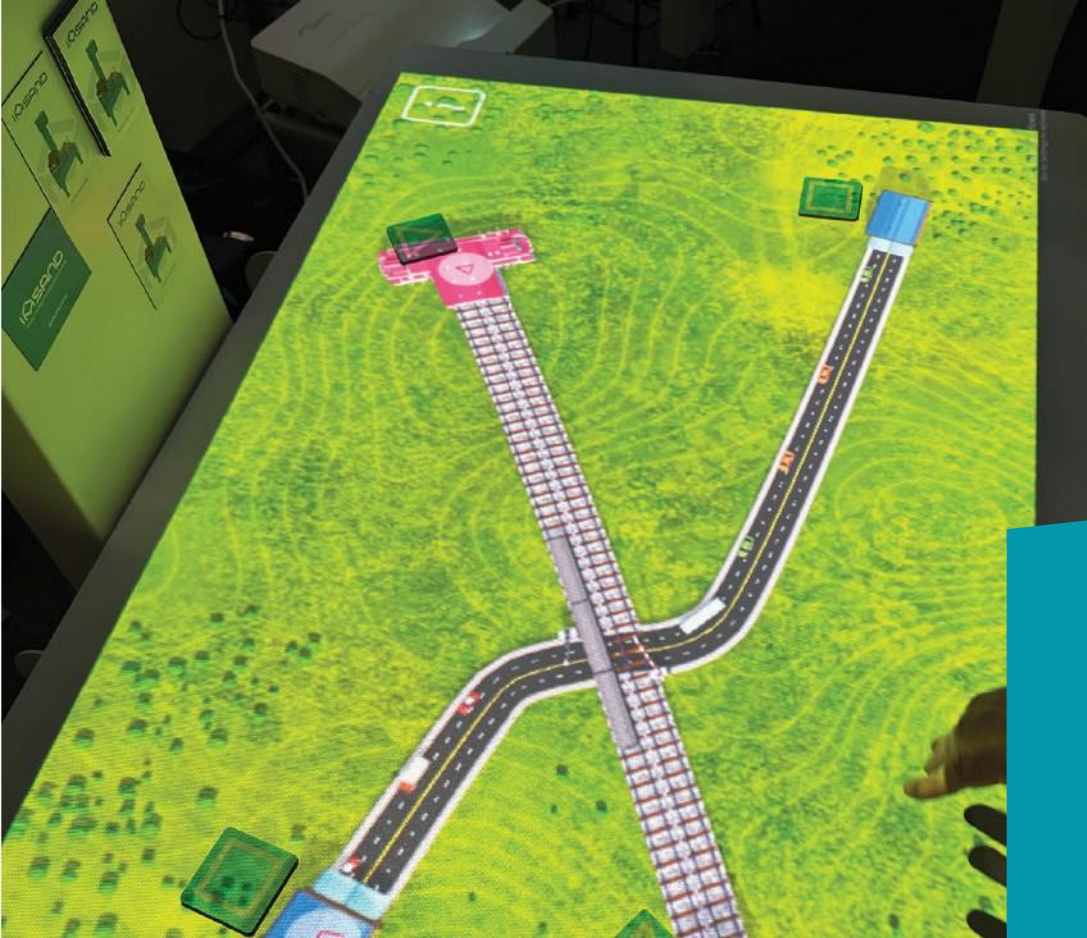
# Interactive Sandbox

Revolutionising  
immersive learning

## Our Story

Learn about a multi-format educational, learning, and therapeutic tool based on the principles of neurodiversity, psychological well-being, and improving linguistic inclusion. IMSAND is an augmented reality sandbox. Depending on the depth of the sand or the blocks used, the system produces real-time computer graphics that provide additional information about the object being observed.

We have designed the Interactive Sand Table so that you can use it with Interactive Sand and its educational games. After converting the table with the included lid, use the software and the letter blocks for educational activities with letters, words, and sentences, as a language teaching tool, and as a support for speech and language therapy.

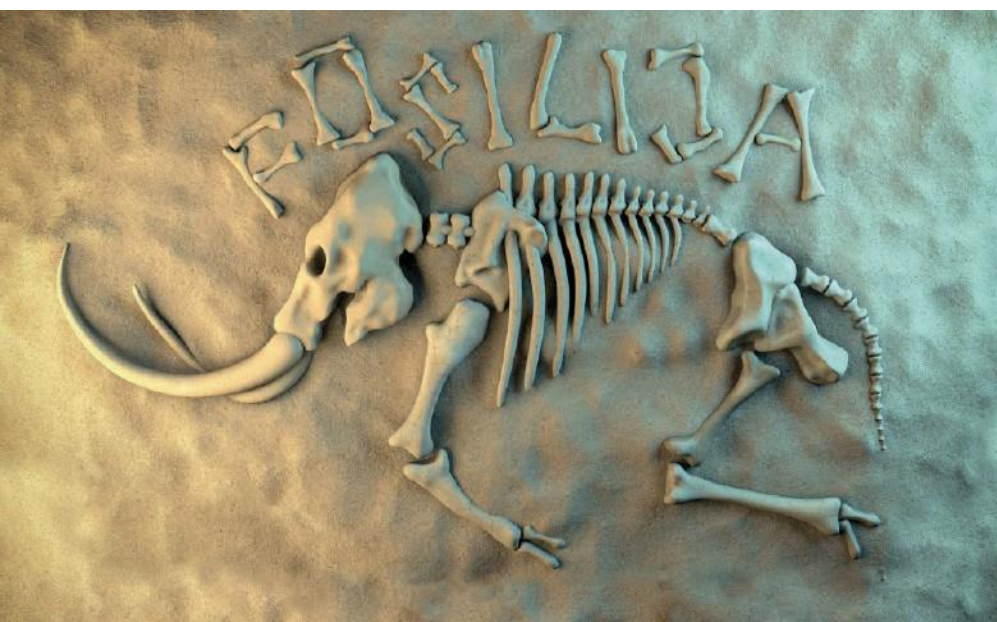


## Why sand?

Our body's tactile perception stimulates our whole body through the skin, which has many active points. Contact with sand has a positive effect on well-being: it relieves pain, anxiety, insomnia, and stress.

This educational tool is in line with the Universal Design Principles:

- adaptable to individual needs
- simple and intuitive to use
- the principle of tolerance to error states that fully implemented tasks do not have correct or incorrect usage scenarios.

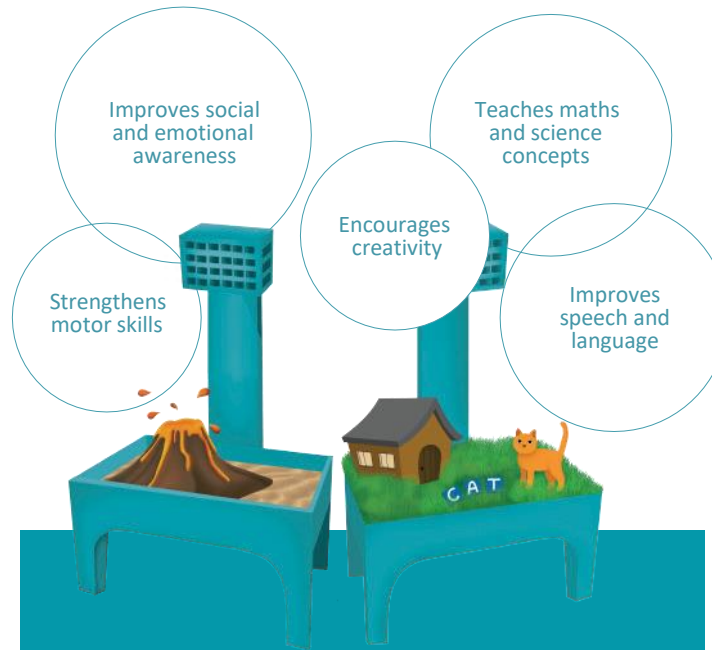




Model: IMSAND Lite

## Technical parameters 1

Computer	
Processor	AMD Ryzen™ 5 5600G 3.9-4.4GHz
RAM	16 GB (2x8GB) DDR4 3200MHz
Memory	4 GB EMMC (internal)
Connections	Wi-fi 802.11 2.4G Ethernet
Inputs	4 x USB 3.2 Gen1 Type-A ports, 1 x HDMI; 1 x RJ45; 1 x audio jack.
Other parameters	Customised for software to run smoothly and without glitches
Projector	
Image format	16:10
Resolution	1280 x 800 pixel
Brightness	3600 ANSI lumens
Contract	20000:1
Lamp of operating hours	4500 hours
Connections	2x15pin D-sub, 2xHDMI, 2xAudio-In, 1xAudio-Out, Speakers Mono
Control	Switched on by button and remote control
3 D depth and motion sensor (with 3D camera)	
Resolution (depth)	640 x 480 (VGA), 30 frames per second
Resolution (RGB)	640 x 480 @30 frames per second
Connections	USB 2.0
Principle of operation	The sensor detects the height and depth of the sand, and blocks with different symbols when they are placed on the covered sand reservoir



Augmented reality sandbox

Interactive playground

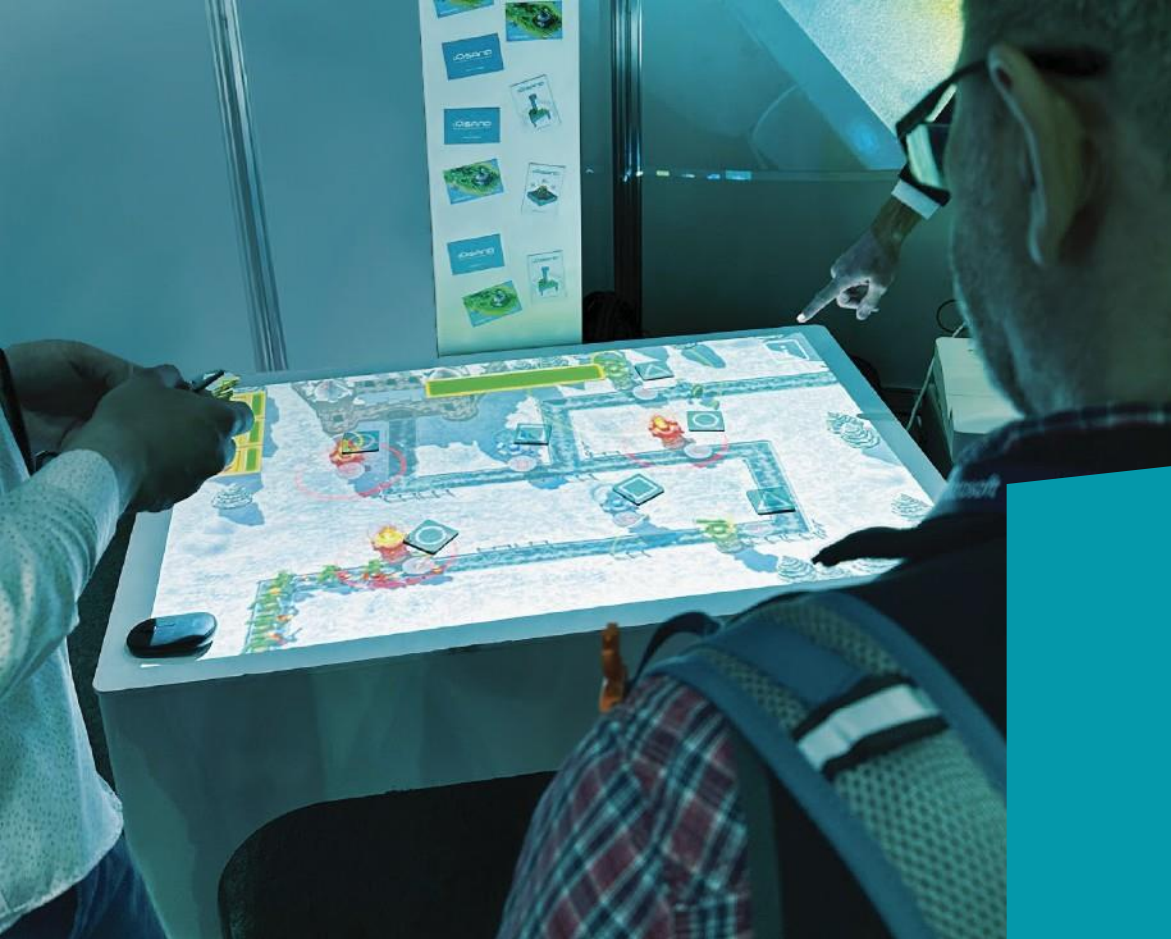
Education and entertainment

Inspires and equips today's children with skills and abilities of the future

## Technical parameters 2

Software	
Operating system	Windows
Number of games	5 games (7 games to play with interactive sand, 8 games with lid and blocks). In the game menu you can choose the language of the games (English, Lithuanian)
Corpus	
Reservoir with telescopic stand	1135 x 826 x 1858 mm +/- 1 % Size of interactive play area: 0,733 m2
Material	Metal
Mobility	The system is combined into one and can be moved from one place to another, with 4 wheels
Sand	
Properties	Interactive sand is made up of a collection of minerals (similar to quartz sand), special adapted for use with the Interactive Sand Table, free flowing and non stick.
Quantity	Minimum sand quantity 100 kg
Accessories	
Reservoir lid	1 piece wooden lid to cover the sand reservoir and transform it into an interactive table
Makers	The box contains 132 wooden blocks (the system recognizes letters and numbers and interactively connects them).
Instructions	Description of how to use the equipment, description of each educational activity with examples of use.
Control	1) Software remote control 2) Projector remote control

The equipment comes with a 24-month manufacturer's warranty.



IMSAND



## Contact

UAB "LithuaniaTech"  
Saulėtekio al. 15-1, Vilnius, Lietuva  
+370 603 34130  
[info@lithuaniatech.eu](mailto:info@lithuaniatech.eu)

