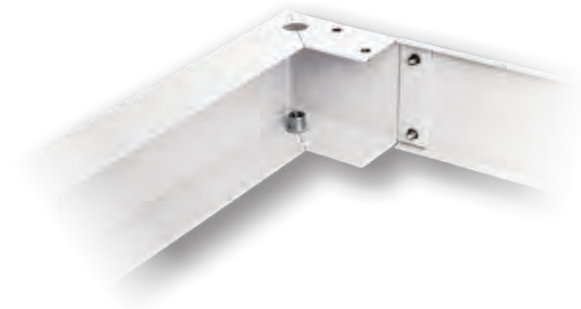


Product information

Plinth for network cabinets



- Quick and easy to assemble with M6 x 8 mm bolts (supplied).
- Fixing to the network cabinet with supplied screws.
- Perforate front plate and three cable entries from both sides and rear.
- Material: steel sheet.
- Paint finish: RAL 7035 (light grey).
- The base height can be increased to 200 mm by screwing two bases together.

Available dimensions

Dimensions [mm]			Weight [kg]	Load capacity [kg]	Index RAL 7035	Index RAL 7021
Width	Depth	Height				
600	600	100	4,7	400	11070660.1	11070660.2
800	800	100	5,9	400	11070680.1	11070680.2
600	900	100	6,5	400	11070690.1	11070690.2
800	600	100	5,3	400	11070860.1	11070860.2
600	800	100	6,5	400	11070880.1	11070880.2
800	900	100	7,1	400	11070890.1	11070890.2
600	1000	100	7,7	400	11070810.1	11070810.2
800	1200	100	9,2	400	11070812.1	11070812.2