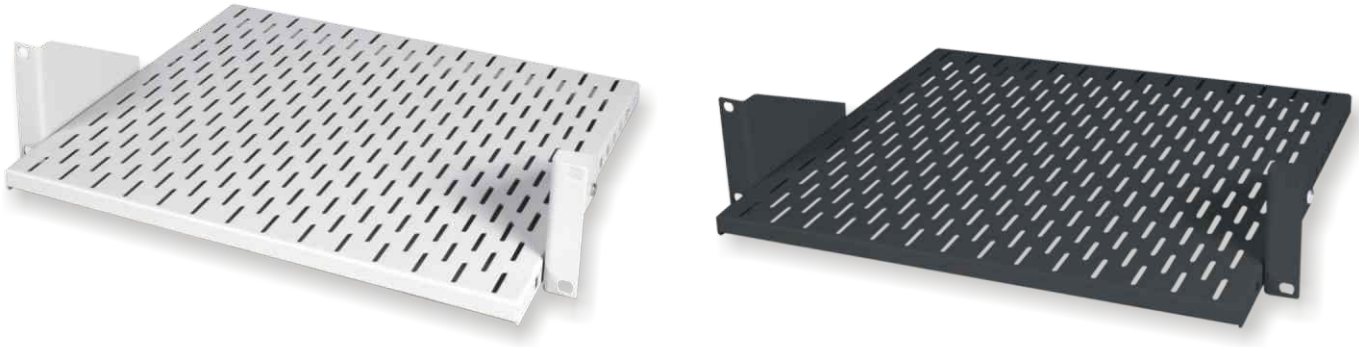


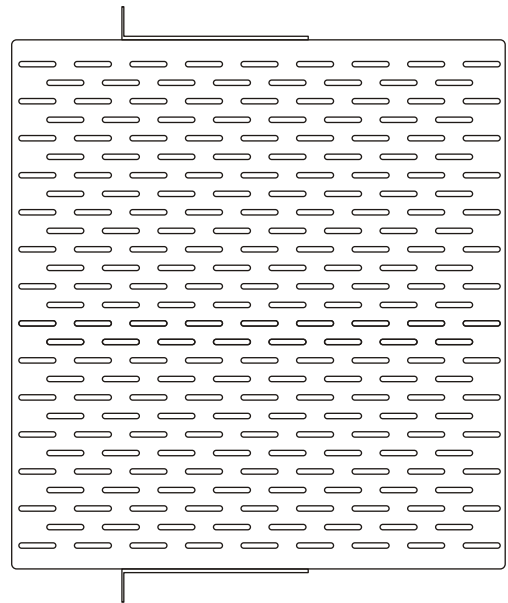
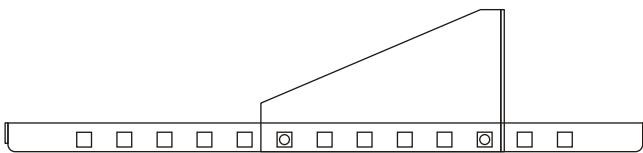
Product information

Shelf 2U/19"



- Can be used in all network and server cabinets and open frames from a depth of 500 mm,
- Depth adjustable at spacing of 25 mm,
- Material: steel sheet,
- Finish RAL 7035 (light grey), or RAL 7021 (black).

Available dimensions



| Type | Depth [mm] | Weight [kg] | Capacity [kg] | Index RAL 7035 | Index RAL 7021 |
|------|------------|-------------|---------------|----------------|----------------|
| 2U | 400 | 2 | 40 | 11115240.1 | 11115240.2V |

Contact



BKT Elektronik

Export Department

69 Łochowska Str.

86-005 Białe Błota

tel. +48 52 36 36 371, -772, -780

fax. +48 52 36 36 370

e-mail: export@bkte.pl

